

NIR Image Reduction of NICFPS APO Data of SACS X-Ray Detected Galaxy Clusters

Angelina Azzo and Dr. Dai

What is a Galaxy Cluster?

- A structure that has hundred to thousands of galaxies that are together through gravity that have the mass of around 10^{14} solar masses.
- Mostly made up of dark matter, hot gases, and stars/galaxies.



<https://www.universetoday.com/30522/galaxy-cluster/>

Why do we care about Galaxy Clusters?

- Learn about how the galaxy cluster formation
- To learn more about galaxy formation, and evolution
- Find out more about dark matter.

Where are we getting this data from?

- Apache Point Observatory
- APR (Astrophysical Research Consortium) a 3.5 meter telescope
- The telescope uses a NICFPS.
- NICFPS is a near infrared camera and Fabry Perot Spectrometer.

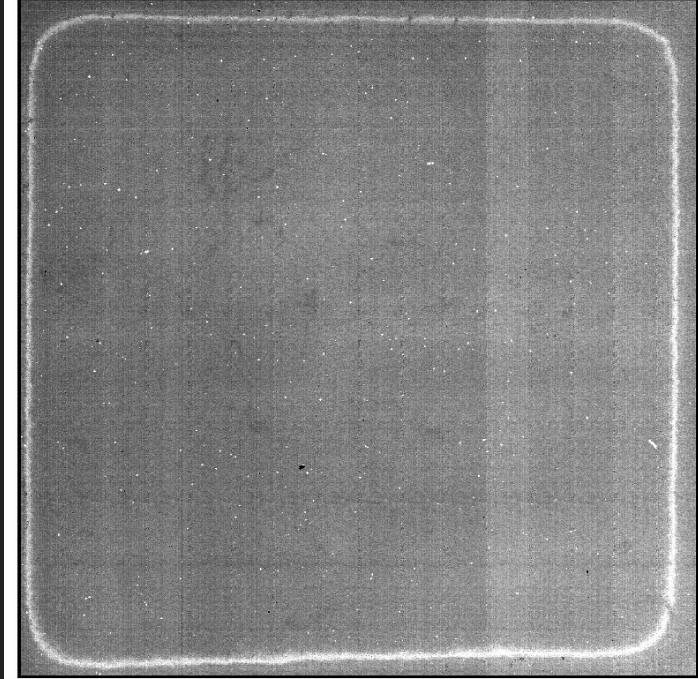


<https://www.apo.nmsu.edu/>

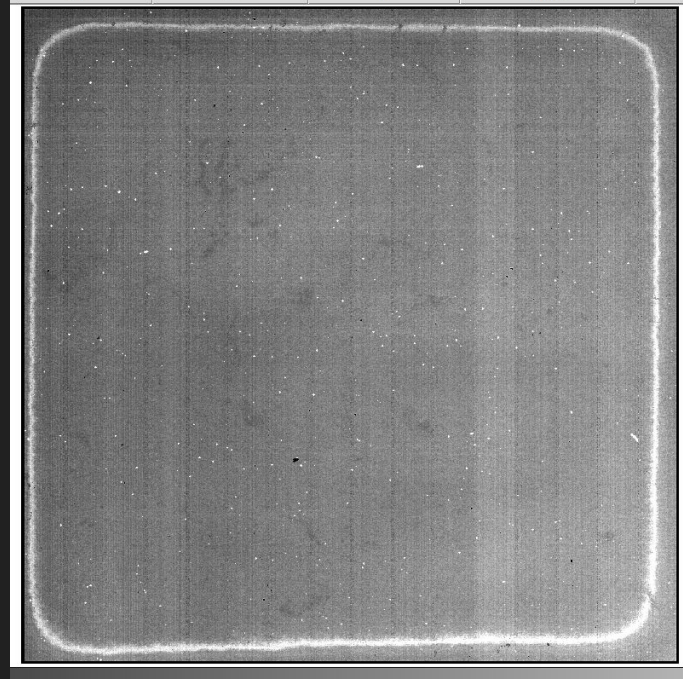
What are we doing with these images?

- IRAF = General Image Reduction and Analysis
- Dark frames

Before dark
combine



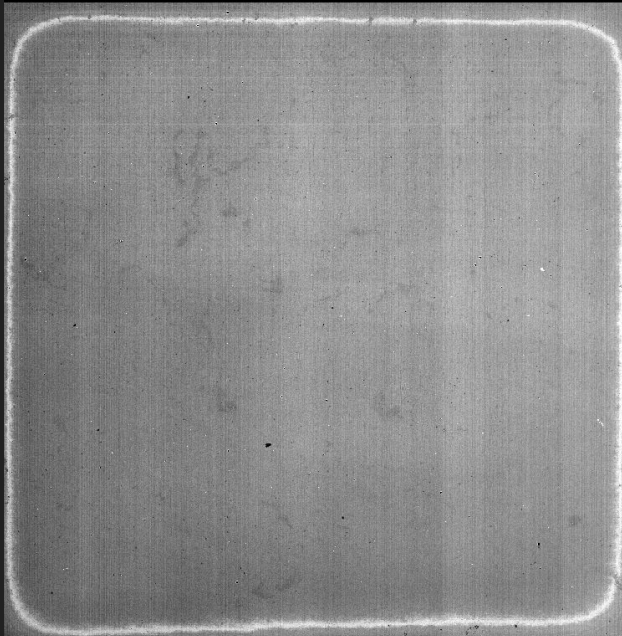
After
dark
combine



What are we doing with these images continued

- Flat images/flat combine
 - Remove the dark shadows caused by dust motes

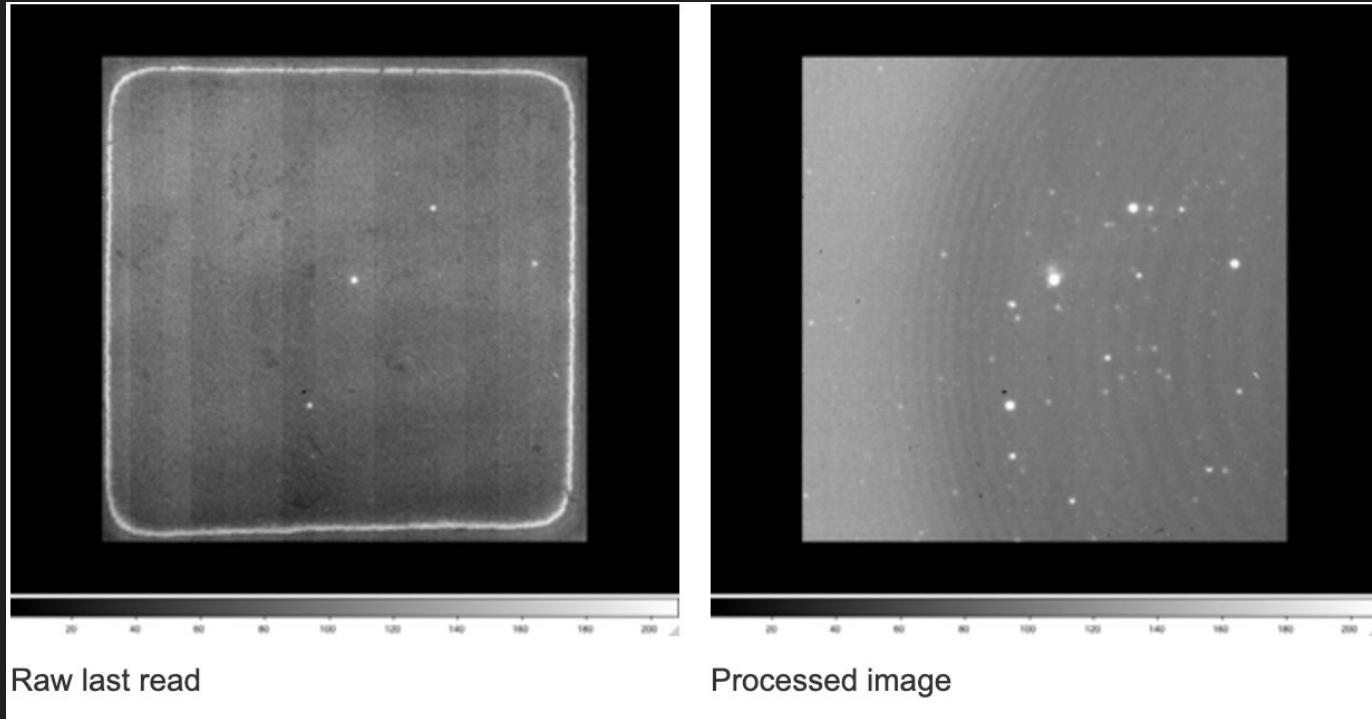
Before
flat
combine



After flat
combine



What we want in our end product



Reference Page

<https://www.apo.nmsu.edu/arc35m/Instruments/NICFPS/>

<https://iraf-community.github.io/doc/beguide.pdf>

<https://www.apo.nmsu.edu/>

<https://www.universetoday.com/30522/galaxy-cluster/>